



OVERVIEW

The RL200 is an intelligent expansion controller that adds 12 extra control outputs to any Ranch Systems wireless unit. Using RS485 communication, multiple RL200s can be “daisy-chained” on the same wireless unit to provide up to 72 control outputs in a wired network up to a total of 1000 feet.

When used for controlling valves, each of the 12 outputs can be configured as either N.O (normally open) or DC latching. N.O. is used to switch existing 24 VAC irrigation currents while DC latching can be used with compatible solenoids to switch valves using the power provided by the RL200 (ultimately from the host RM210 or RS300 unit).

Outputs in the N.O. configuration can also be used to switch virtually any other pieces of equipment under low-voltage electrical control, such as pump starting circuits or gate opener input.

APPLICATIONS

- Irrigation & valve controls
- Industrial automation
- Pump start/stop
- Gate openers

FEATURES

- Connects to any RM210 or RS300 via RS-485 port
- Four (4) NEMA 4-wire glands for relay wiring
- Each relay can be configured for N.O. isolated switch or DC latching valve control
- N.O. configured outputs can control virtually any low-voltage electrical control, such as pump starting circuits or gate openers
- Units can be daisy-chained, for a total of up to 72 control outputs over a distance of up to 1000ft
- Stand-alone micro-controller eliminates cable loss, since control signal is sent digitally to RL200 and executed close to valves
- Uses power only when receiving commands from the host unit

SPECIFICATIONS

Host Unit Connection

Connection Type

RS-485: Includes a 10ft RS-485 cable with 4-pin male connector
Can be extended up to 1000ft (including daisy-chained units)

Units can be daisy-chained using Y-adaptor cables for up to 72 total control outputs

Connectors: Unless specified otherwise, all input and communication ports utilize SwitchCraft/Conxall Micro-Con connectors.

Control Outputs

N.O. Switch Maximum Voltage: 24V

N.O. Switch Maximum Current: 2 Amp

DC Latching Maximum Voltage: 12VDC

DC Latching Maximum Current: 2 Amp (inrush)

DC Latching Excitation Time: 100 mS (typical)

Connectors: Screw-type terminals

Configuration: Outputs configured via on-board jumpers

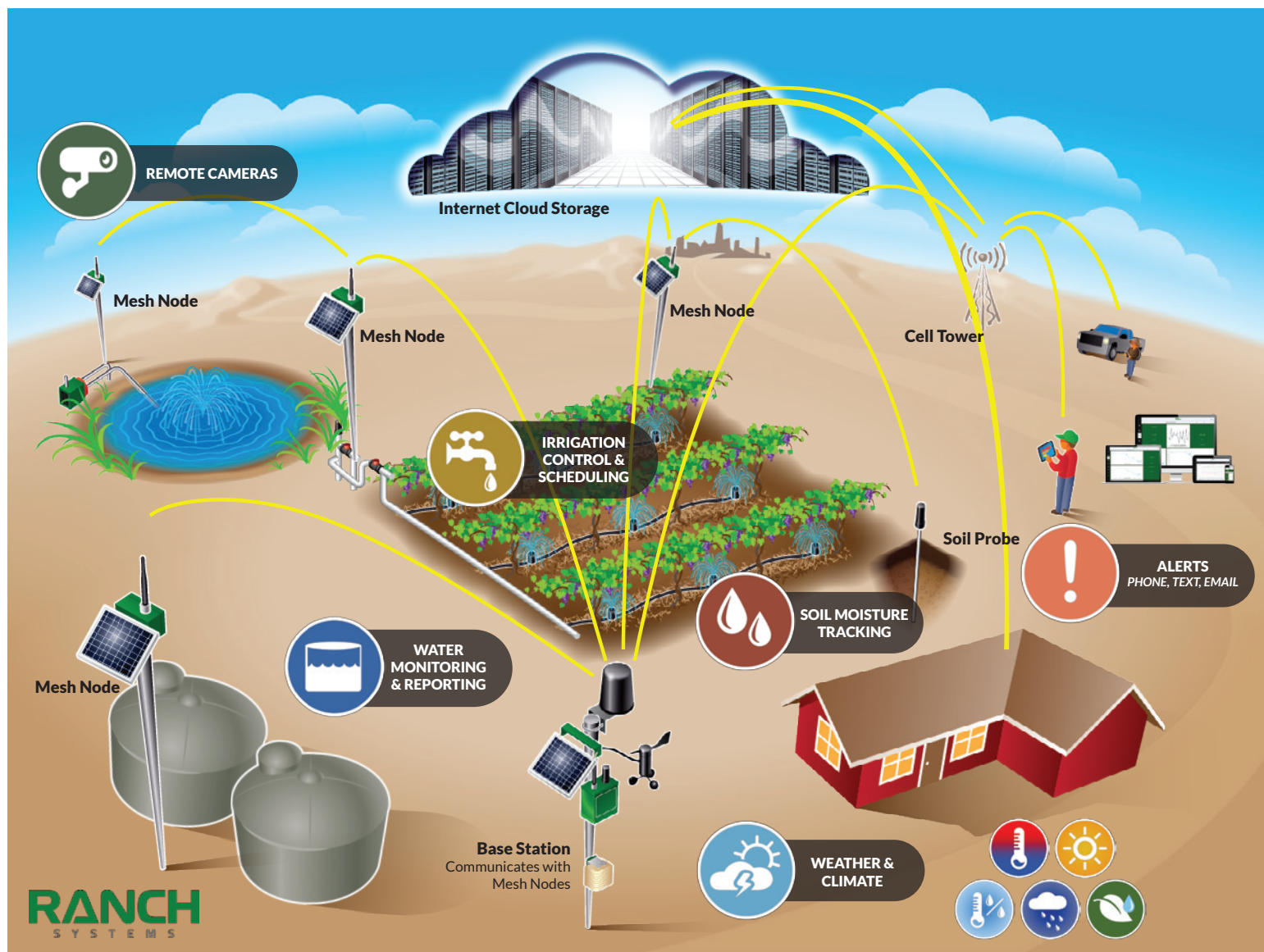
Hardware

Operating Temperature: -40°F to 158°F (-40°C to 70°C)

Dimensions (H x W x D): 11.5 x 10.5 x 5.5 inches
(292 x 267 x 140mm)



RANCH NETWORK MAP



UNITS



RS130



RM210



RS300



RL200



RX300

Telemetry Units -----

Expansion Units -----