



Hardware

Enclosure: Powder-coated machined aluminum base with heavy duty SAN plastic dome cover

Mount: Powder-coated steel bracket compatible with strut channel, simple pole, or direct screw-on mount

IP Rating: IP67

Operating Temperature: -40°F to 185°F (-40°C to 85°C)

Dimensions (H x W x D): 12 x 4 x 4 inches (30.5 x 10.2 x 10.2 cm)

Weight: 7 lbs

Communications & Input Ports

PORT	SIGNAL TYPE	TYPICAL USE
1	Serial RS-232 (requires attachment board A2)	Serial communications port RX300-232 expansion unit Remote camera
1	Serial RS-485 (ASDCII, Modbus RTU) or SDI-12 Requires attachment board A1 (default configuration)	RX300 expansion unit Flow meter optical reader
Diagnostics/ STDIO	Micro-USB port (includes weather resistant plug)	Diagnostics and programming
2.1	Digital counter/frequency and Analog	Flow meter
2.2	(0-5VDC) or I2C compatible	Weather station
Port Connectors	Unless specified otherwise, all input and communication ports utilize Switch-Craft/Conxall Micro-Con connectors.	

APPLICATIONS

- Weather station
- Soil moisture monitoring
- Pressure monitoring
- Tank, pond, or well level monitoring

FEATURES

- LCD display
- Infrared remote control
- Two 2.4AH Li-Ion rechargeable batteries
- 360 degree integrated flexible solar panel
- Advanced MPPT solar charge controller
- ARM 32-bit CPU
- 4MB flash file system for data buffering
- Internal temperature sensor
- Sensors for battery voltage, current draw, and solar charging
- 12V generator for powering sensors that require 12V excitation

SPECIFICATIONS

Cellular Configurations

Modes: GSM/3G/HSPA/Telstra (International)

Antenna Type: Built-in omnidirectional

GPS Configurations

Type: GPS L1 with AGPS from cellular modem

Antenna Type: Built-in omnidirectional

Power

Solar Panel: 1.5W built-in cylindrical

Charge Regulation: MPPT type automatic

USB Charger: Integrated Micro-USB port (5.0VDC 1.0A) charger and cable not included

Internal Battery: 2 x 3.7V NiMH, 2.4Ah (total 4.8Ah)

Typical Run Time: Up to 1 month without sunlight

Sensing Capabilities

Sample Rate: Programmable 60 secs to 18 hours

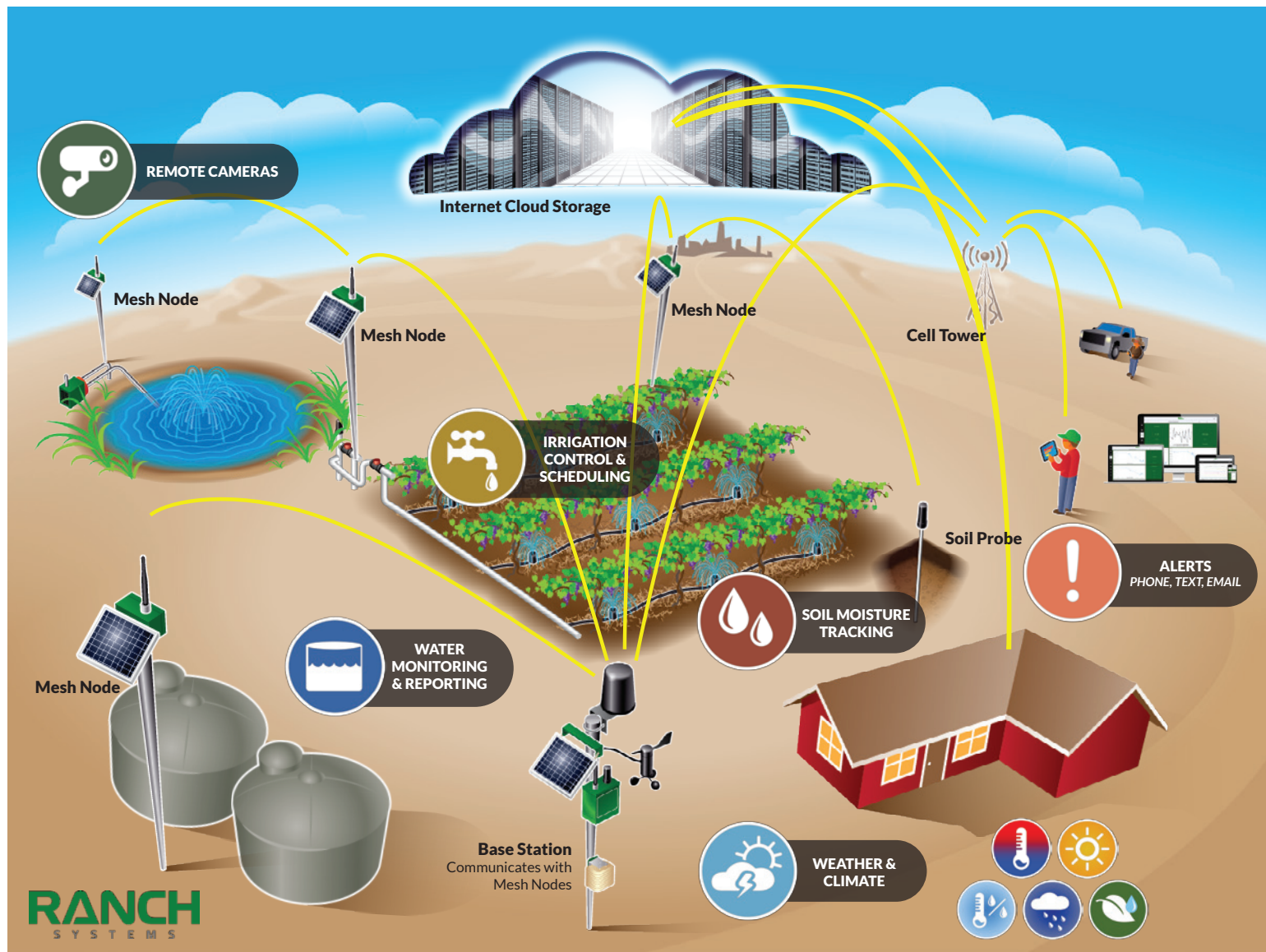
Excitation Voltage: 5V and 12V

Excitation Time: Programmable 10ms to 2.5 secs

Memory: 4MB flash drive (up to 1 year of backup)



RANCH NETWORK MAP



UNITS



RS130



RM210



RS300



RL200



RX300

Telemetry Units -----

Expansion Units -----