



The Octave Flow Meter's unrestricted flow path prevents clogging and provides low pressure loss.

APPLICATIONS

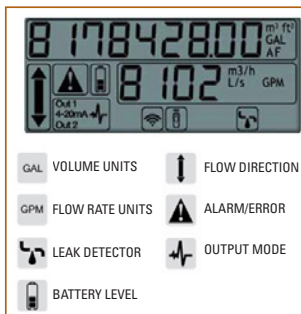
- Agricultural, Industrial, Municipal

FEATURES

- Double-beam ultrasonic sensors provide highly accurate flow data and reliable operation.
- No impeller or moving parts in the flow path provides for unrestricted, low pressure loss flows.
- Flow ranges from <1 GPM to 5,500 GPM.
- Multi-line readout screen provides complete flow and volume information along with:
 - Leak detection
 - Flow direction
 - Output mode
 - Battery level
 - Alarms and errors
 - Active communication mode
- Vacuum sealed and tamper proof IP68 register provides durability and long-term performance.
- Lithium batteries provide a 10 year life expectancy.
- Each meter has a unique, unalterable bar-coded serial number for identification.
- Standard registers are programmed to log and display both forward and reverse flow.
- Each meter ships with a certificate verifying flow accuracy with a $\pm 1.5\%$ accuracy for nominal flow rates.

SPECIFICATIONS

- Sizes: 2", 3", 4", 6", 8", 10" and 12"
- Body: Epoxy-coated cast iron with flange inlet and outlet
- Working pressure: 175 psi (16 bar)
- Fluid Temperature Range: 32° to 122° F (0.1° to 50° C)
- Connection: Flanges ANSI ISO
- Power Source: 2 'D' Size Lithium batteries
- Environmental Protection: IP-68, Ambient operation temperature for display: -13 to 131° F (-25° to 55° C)
- Display Units: Multi-line, programmable 9 digit LCD display
- Output (optional): Programmable single/dual open collector pulse output or externally powered 4-20 mA loop



Multi-line digital LCD readout display provides immediate reporting and visual indicators for critical conditions. The 9 digit display is easy to read at a glance.

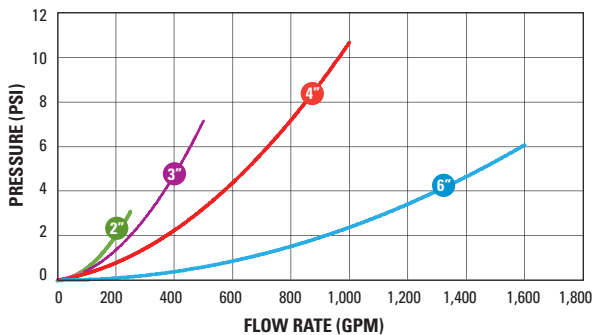
Additional Specifications



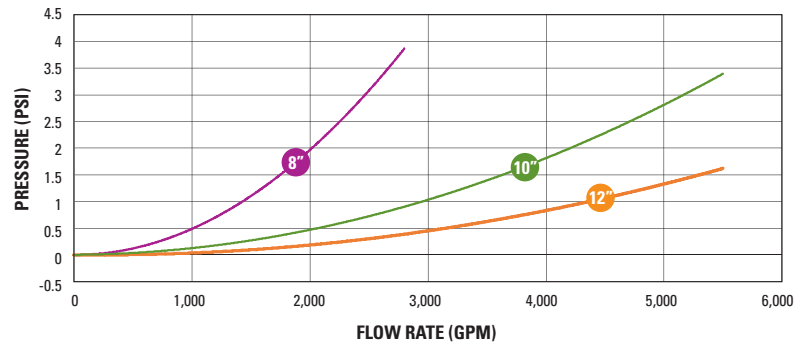
PERFORMANCE DATA

SIZE	STARTING FLOW (GPM)	EXTENDED LOW FLOW @ +/- 5% (GPM)	NOMINAL FLOW RANGE @ +/- 1.5% (GPM)	SAFE MAX. FLOW RATE (GPM)	HEADLOSS @ MAX. FLOW RATE (PSI)
2"	0.00	0.35	0.50-220	250	3.1
3"	0.11	0.55	1-350	400	6.9
4"	0.11	0.88	1.5-550	650	10.25
6"	0.88	2.2	3.5-1,375	1,500	6.05
8"	0.88	3.5	5.5-2,200	3,000	3.95
10"	2.2	8.8	14-5,500	5,500	1.75
12"	2.2	8.8	15-5,500	5,500	3.4

HEADLOSS CURVE - 2", 3", 4" AND 6"

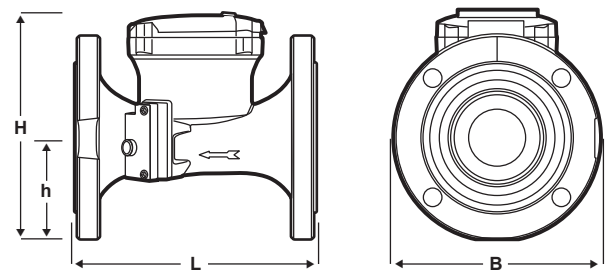


HEADLOSS CURVE - 8", 10" AND 12"



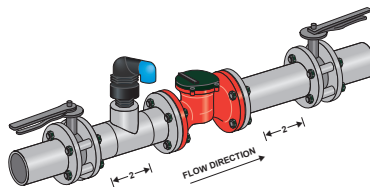
DIMENSIONS & WEIGHT

SIZE	LENGTH (L)	WIDTH (B)	HEIGHT (H)	HEIGHT (h)	WEIGHT
2"	7.9"	6.5"	7.5"	1.6"	19.8 LBS
3"	8.9"	7.9"	8.3"	3.5"	28.7 LBS
4"	9.8"	8.7"	8.8"	4.1"	33.1 LBS
6"	11.8"	11.2"	11.1"	5.5"	70.5 LBS
8"	13.8"	13.4"	13.1"	6.5"	99 LBS
10"	17.7"	15.9"	15.9"	8.0"	150 LBS
12"	19.7"	19.2"	19.3"	9.6"	216 LBS



INSTALLATION GUIDELINES

Two (2) pipe diameters straight pipe before and after meter



Five (5) pipe diameters straight pipe after pump when located before meter

