



ROJO



APPLICATIONS

Maintaining Water Levels in:

- Animal Drinking Troughs
- Water Storage Tanks
- Water Cisterns
- High Pressure Cleaning Systems

FEATURES (Rojo)

- Side, Bottom, Top Mounting
- Valve body screws apart by hand for easy servicing
- Flow stops when unscrewed for servicing
- Supplied with backnut and seal washer
- Built in check valve
- Fully adjustable float angle
- Pressure range 0-10 Bar (0-150 PSI)
- Low pressure model also available 0-5 Bar(0-75 psi) gives 60% more flow
- Non corrosive material construction
- Has switch to lock valve in off position

TOPAZ



FEATURES (Topaz)

- High flow
- Compact robust construction
- Mounts horizontally or vertically
- Made from corrosion resistant materials
- Shuts down slowly to minimise water hammer
- 20 - 60mm ($\frac{3}{4}$ " - $2\frac{1}{2}$ ") water level differential (increases as water inlet pressure increases)
- Pressure rating 0.3 - 7 Bar (5 - 100 PSI)
- Float position easily adjustable with no tools
- Valve has switch to lock it in off position
- Has port to connect Frostpro anti freeze device

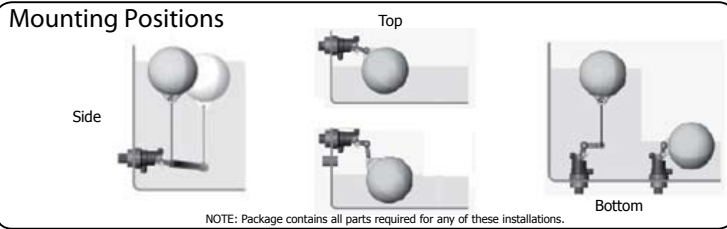
SPECIFICATIONS

- Flows: Topaz: upto 55 gpm
Rojo: upto 4 gpm
- Pressure rating: Topaz: 0.3 - 7 Bar(5 - 100 PSI)
Rojo: 0-10 Bar (0-150 PSI)
- Maximum water temperature: 45°C (115°F)

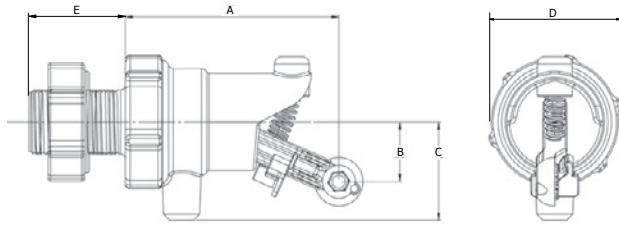
Additional Specifications 



Mounting Positions

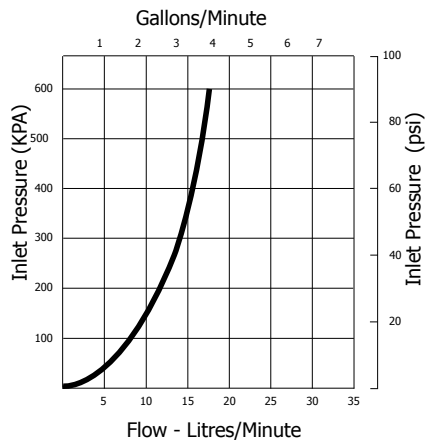


DIMENSIONS

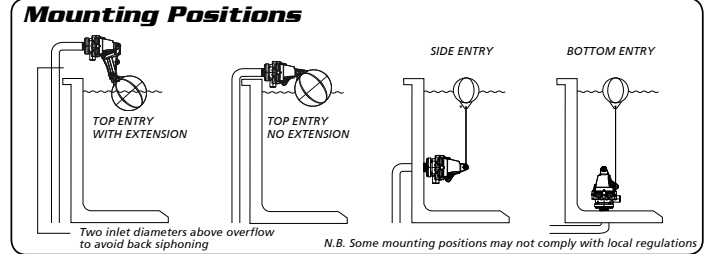


	MM	INCHES
A	88	3-1/2
B	25	1
C	40	1-9/16
D	56	2-1/4
E	38	1-1/2

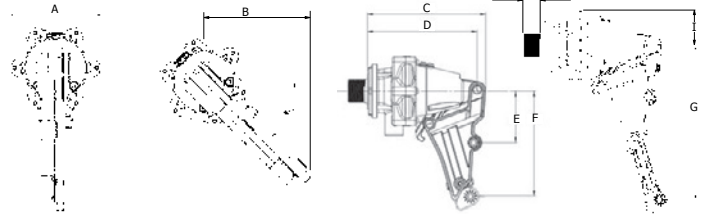
FLOW GRAPH



Mounting Positions



DIMENSIONS



	MM	INCHES
A	88	3-1/2
B	100	3-15/16
C	134	5-1/4
D	124	4-7/8
E	58	2-9/32
F	119	4-11/16
G	176	6-15/16
H	22	7/8
I	40	1-7/16

FLOW GRAPH

