

SHUG COUPLER SET

## SHUG ADAPTERS

| PART #     | DESCRIPTION                 | PSI | LBS. |
|------------|-----------------------------|-----|------|
| MC-436-68  | 6" male shug - 8" male shug | 300 | 6    |
| MC-436-060 | 6" NPT - 6" shug flange     | 300 | 3    |
| MC-447-602 | 6" female shug cap - 2" NPT | 300 | 9    |
| MC-447-802 | 8" female shug cap - 2" NPT | 300 | 12   |

### SPECIFICATIONS

- Female adapters and caps include gaskets
- 6061-T6 extruded aluminum
- Type III hard anodized (plain optional)



| PART #    | DESCRIPTION                             | PSI | LBS. |
|-----------|---|-----|------|
| MC-MA-060 | 4-6" steel male weld-on adapter, flared | 300 | 9    |
| MC-MA-080 | 7-8" steel male weld-on adapter, flared | 300 | 12   |
| MC-FA-060 | 4-6" steel female weld-on adapter       | 300 | 8    |
| MC-FA-080 | 7-8" steel female weld-on adapter       | 300 | 8    |



## GAUGE PROTECTORS

| PART #    | DESCRIPTION          | LBS. |
|-----------|----------------------|------|
| MC-GG-025 | Standard single hole | 2.4  |

### SPECIFICATIONS

- Regular duty
- Stainless bolts
- 1 - 3/4" port and 1 - 1/4" port



## SHUG HOSE COUPLER AND MENDERS

| PART #     | DESCRIPTION         | PSI | LBS. |
|------------|---------------------|-----|------|
| MC-429-040 | 4" shug coupler set | 300 | 22   |
| MC-429-050 | 5" shug coupler set | 300 | 21   |
| MC-429-060 | 6" shug coupler set | 300 | 23   |
| MC-429-070 | 7" shug coupler set | 300 | 30   |
| MC-429-080 | 8" shug coupler set | 300 | 30   |
| MC-HM-040  | 4" shug mender set  | 300 | 11   |
| MC-HM-050  | 5" shug mender set  | 300 | 12   |
| MC-HM-060  | 6" shug mender set  | 300 | 14   |
| MC-HM-070  | 7" shug mender set  | 300 | 18   |
| MC-HM-080  | 8" shug mender set  | 300 | 19   |

### SPECIFICATIONS

- Rib spacing 0.900" center to center
- Double bolt style, stainless
- Knurled ribs for holding strength
- 6061-T6 extruded aluminum barbs
- Type III hard anodized (plain optional)



## SHUG CLAMPS

| PART #    | DESCRIPTION                  | PSI | LBS. |
|-----------|------------------------------|-----|------|
| MC-CL-060 | 4-6" shug steel plated clamp | 300 | 3    |
| MC-CL-080 | 7-8" shug steel plated clamp | 300 | 3    |

### SPECIFICATIONS

- Carbon steel
- Lynch pin and bolt
- Zinc plated

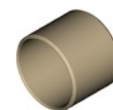


## COUPLER PARTS

| PART #     | DESCRIPTION      | PSI | LBS. |
|------------|------------------|-----|------|
| MC-INS-060 | 4-6" shug insert | 300 | 2    |
| MC-INS-080 | 7-8" shug insert | 300 | 3    |
| MC-GAS-060 | 4-6" shug gasket | 300 | 0.1  |
| MC-GAS-080 | 7-8" shug gasket | 300 | 0.1  |

### SHUG INSERT

- 6061-T6 extruded aluminum
- Type III hard anodized (plain optional)



### SHUG GASKET

- EPDM rubber
- Precision molded

